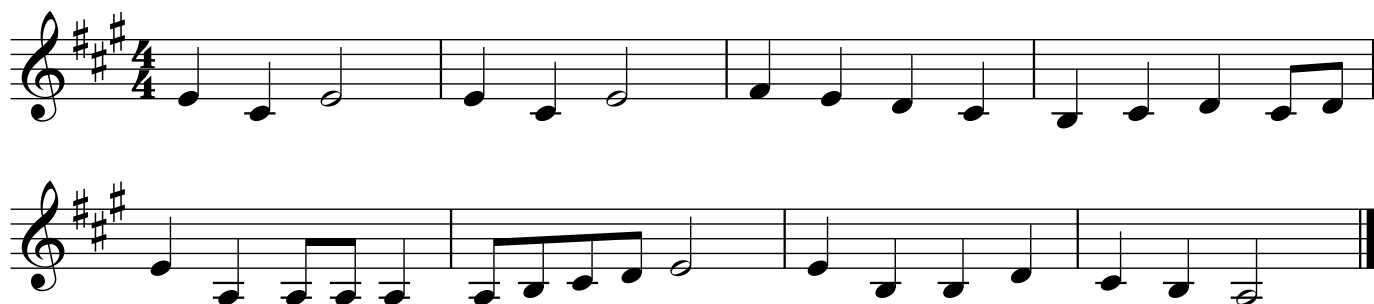
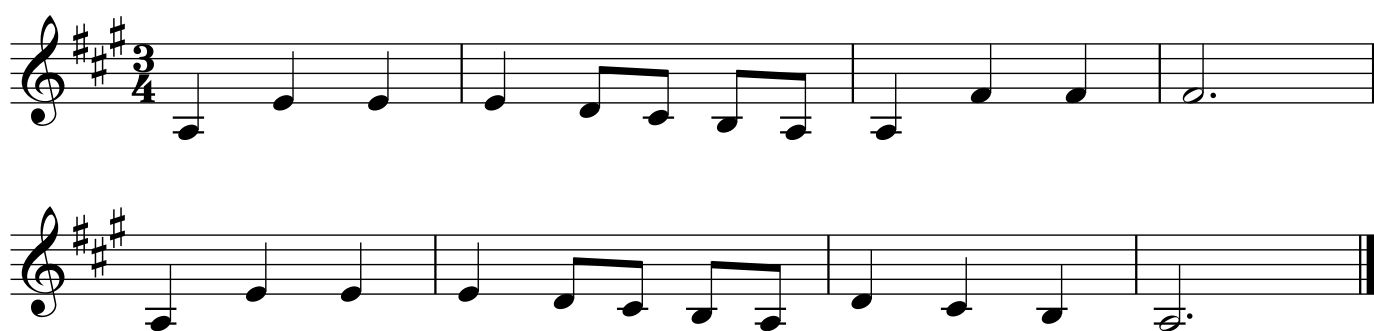


# Tunes in A major

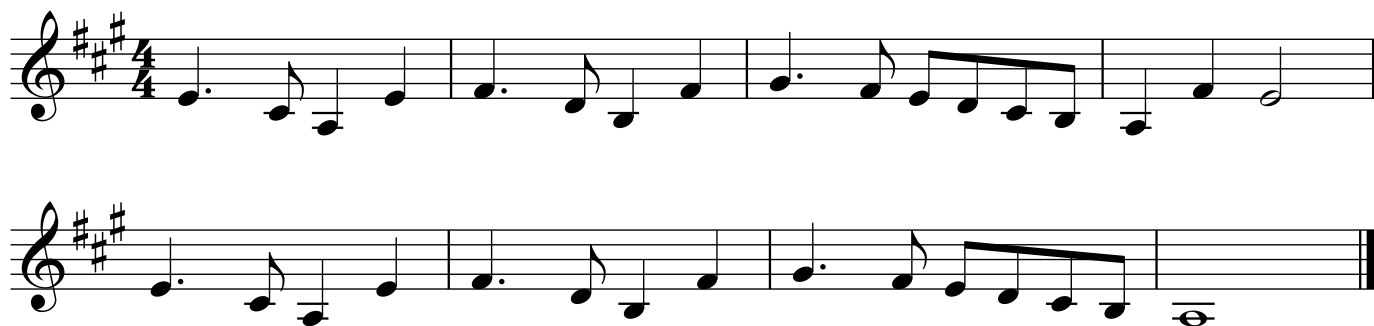
## This Old Man



## Lavender's Blue



## Sing Hosanna (chorus)



## Brahms' Lullaby



### Hickory Dickory Dock

Two staves of musical notation for the song 'Hickory Dickory Dock'. The key signature is three sharps (F#, C#, G#) and the time signature is 6/8. The melody is written on a treble clef staff, and the bass line is on a bass clef staff. The piece concludes with a double bar line.

### Pop Goes the Weasel

Three staves of musical notation for the song 'Pop Goes the Weasel'. The key signature is three sharps (F#, C#, G#) and the time signature is 6/8. The melody is written on a treble clef staff, and the bass line is on a bass clef staff. The piece concludes with a double bar line.

### Sing a Song of Sixpence

Two staves of musical notation for the song 'Sing a Song of Sixpence'. The key signature is three sharps (F#, C#, G#) and the time signature is 4/4. The melody is written on a treble clef staff, and the bass line is on a bass clef staff. The piece concludes with a double bar line.

### Morning Has Broken

Three staves of musical notation for the song 'Morning Has Broken'. The key signature is three sharps (F#, C#, G#) and the time signature is 3/4. The melody is written on a treble clef staff, and the bass line is on a bass clef staff. The piece concludes with a double bar line.

The Can Can

Two staves of musical notation for 'The Can Can'. The key signature is three sharps (F#, C#, G#) and the time signature is 4/4. The melody consists of eighth and sixteenth notes, with some beamed eighth notes.

See the Conquering Hero Comes (Handel)

One staff of musical notation for 'See the Conquering Hero Comes (Handel)'. The key signature is three sharps (F#, C#, G#) and the time signature is 4/4. The melody features a mix of quarter, eighth, and sixteenth notes.

Fine

Two staves of musical notation for the 'Fine' section of 'See the Conquering Hero Comes (Handel)'. The first staff ends with a double bar line. The second staff continues the melody with eighth and sixteenth notes.

D.C. al Fine

One staff of musical notation for the 'D.C. al Fine' section of 'See the Conquering Hero Comes (Handel)'. The melody continues with eighth and sixteenth notes, ending with a double bar line.

Spread a Little Happiness

One staff of musical notation for 'Spread a Little Happiness'. The key signature is three sharps (F#, C#, G#) and the time signature is 4/4. The melody is primarily composed of eighth notes.

One staff of musical notation for 'Spread a Little Happiness'. The melody continues with eighth notes and some beamed eighth notes, ending with a double bar line.

EastEnders

One staff of musical notation for 'EastEnders'. The key signature is three sharps (F#, C#, G#) and the time signature is 4/4. The melody includes a triplet of eighth notes. It ends with a double bar line.

One staff of musical notation for 'EastEnders'. The melody continues with eighth notes and a triplet of eighth notes. It ends with a double bar line.

## Do Re Mi

Musical notation for 'Do Re Mi' in A major (three sharps) and 4/4 time. The piece consists of four staves of music. The first staff begins with a treble clef, a key signature of three sharps (F#, C#, G#), and a 4/4 time signature. The melody is composed of eighth and quarter notes, with some rests. The second and third staves continue the melody, and the fourth staff concludes with a double bar line.

If you need to learn the scale up a 12th, these will help the top section

## Men of Harlech

Musical notation for 'Men of Harlech' in A major (three sharps) and 4/4 time. The piece consists of two staves of music. The first staff begins with a treble clef, a key signature of three sharps, and a 4/4 time signature. The melody is composed of quarter and eighth notes. The second staff continues the melody and ends with a double bar line.

## The British Grenadiers

Musical notation for 'The British Grenadiers' in A major (three sharps) and 4/4 time. The piece consists of three staves of music. The first staff begins with a treble clef, a key signature of three sharps, and a 4/4 time signature. The melody is composed of quarter and eighth notes. The second and third staves continue the melody, with the third staff ending with a double bar line.