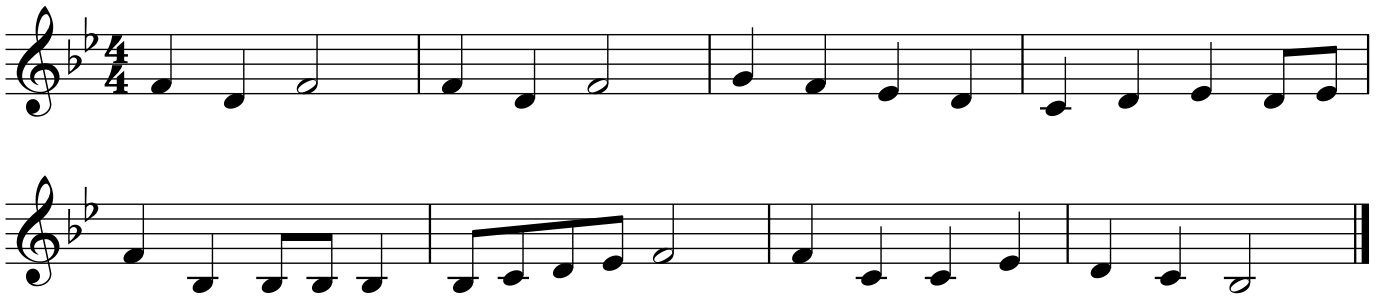
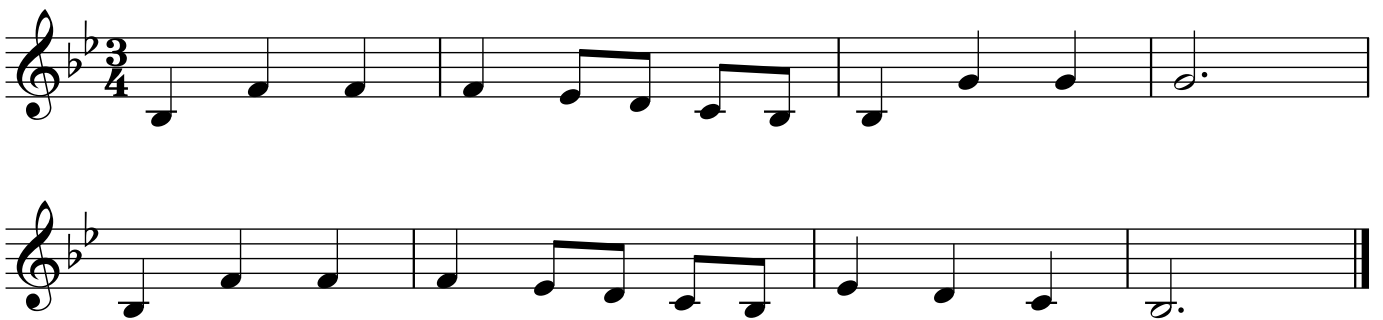


Tunes in B \flat major

This Old Man



Lavender's Blue



Sing Hosanna (chorus)



Brahms' Lullaby



Hickory Dickory Dock

Musical notation for the song "Hickory Dickory Dock". It consists of two staves of music in a 6/8 time signature with a key signature of two flats (B-flat and E-flat). The melody is written on a treble clef staff. The first staff contains the first two measures, and the second staff contains the remaining four measures, ending with a double bar line.

Pop Goes the Weasel

Musical notation for the song "Pop Goes the Weasel". It consists of three staves of music in a 6/8 time signature with a key signature of two flats (B-flat and E-flat). The melody is written on a treble clef staff. The first staff contains the first two measures, the second staff contains the next two measures, and the third staff contains the final two measures, ending with a double bar line.

Sing a Song of Sixpence

Musical notation for the song "Sing a Song of Sixpence". It consists of two staves of music in a 4/4 time signature with a key signature of two flats (B-flat and E-flat). The melody is written on a treble clef staff. The first staff contains the first two measures, and the second staff contains the remaining two measures, ending with a double bar line.

Morning Has Broken

Musical notation for the song "Morning Has Broken". It consists of three staves of music in a 3/4 time signature with a key signature of two flats (B-flat and E-flat). The melody is written on a treble clef staff. The first staff contains the first two measures, the second staff contains the next two measures, and the third staff contains the final two measures, ending with a double bar line.

The Can Can

Two staves of musical notation for 'The Can Can'. The first staff begins with a treble clef, a key signature of two flats (B-flat and E-flat), and a 4/4 time signature. The melody consists of eighth and sixteenth notes, with some beamed eighth notes. The second staff continues the melody and ends with a double bar line.

See the Conquering Hero Comes (Handel)

A single staff of musical notation for 'See the Conquering Hero Comes (Handel)'. It features a treble clef, a key signature of two flats, and a 4/4 time signature. The melody is primarily composed of quarter and eighth notes.

Fine

A single staff of musical notation showing the 'Fine' section of the piece. It includes a double bar line followed by a repeat sign and then continues with the melody.

D.C. al Fine

A single staff of musical notation for the 'D.C. al Fine' section, which includes a repeat sign at the beginning and ends with a double bar line.

Spread a Little Happiness

The first staff of musical notation for 'Spread a Little Happiness', featuring a treble clef, a key signature of two flats, and a 4/4 time signature. The melody uses eighth and sixteenth notes.

The second staff of musical notation for 'Spread a Little Happiness', continuing the melody from the first staff and ending with a double bar line.

EastEnders

The first staff of musical notation for 'EastEnders', featuring a treble clef, a key signature of two flats, and a 4/4 time signature. It includes a triplet of eighth notes in the second measure.

The second staff of musical notation for 'EastEnders', continuing the melody and including another triplet of eighth notes in the second measure. It ends with a double bar line.

Do Re Mi



If you need to learn the scale up a 12th, these will help the top section

Men of Harlech



The British Grenadiers

