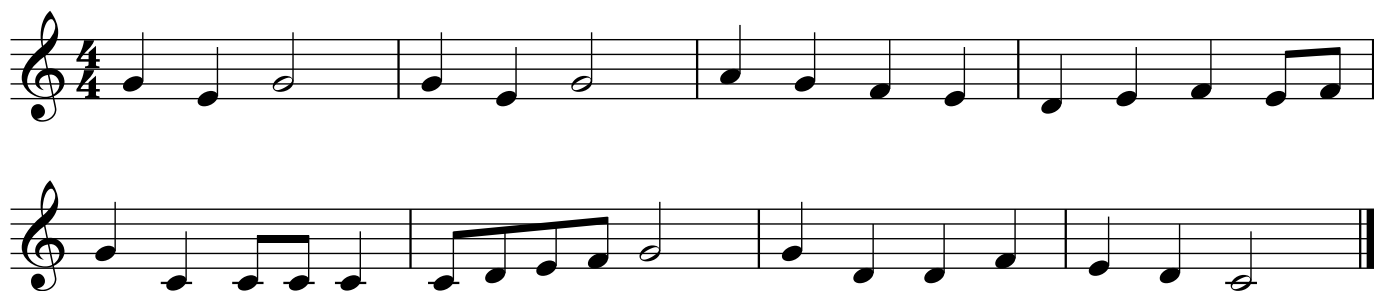


Tunes in C major

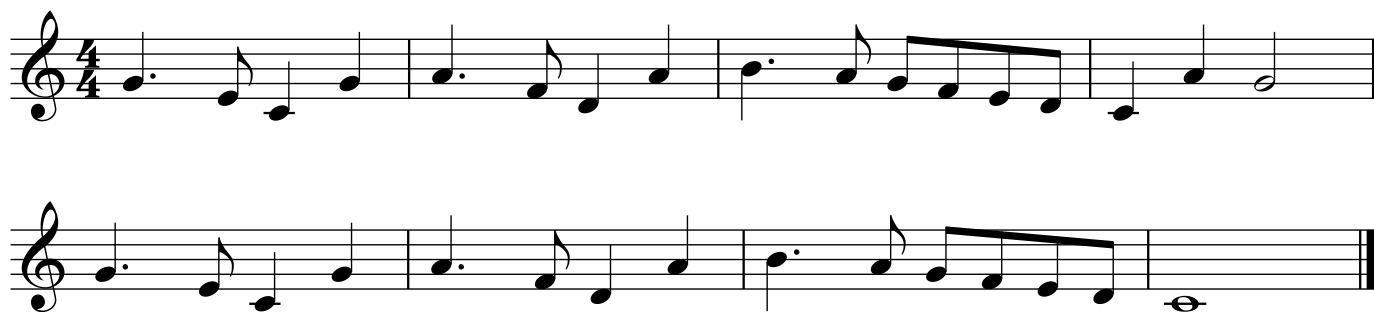
This Old Man



Lavender's Blue



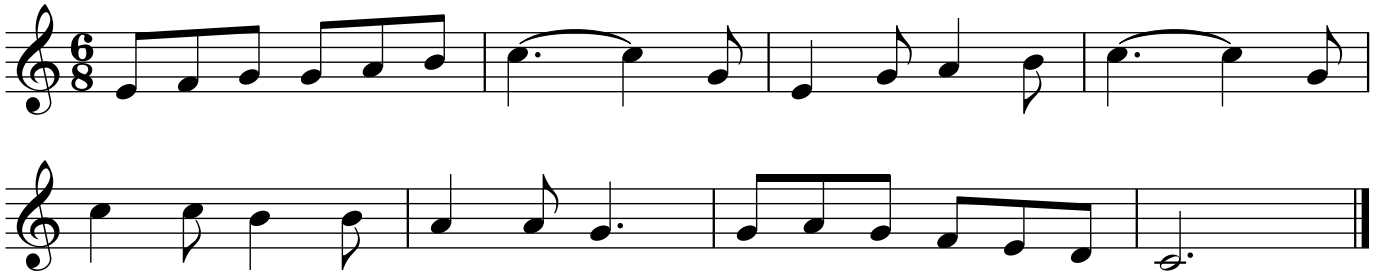
Sing Hosanna (chorus)



Brahms' Lullaby



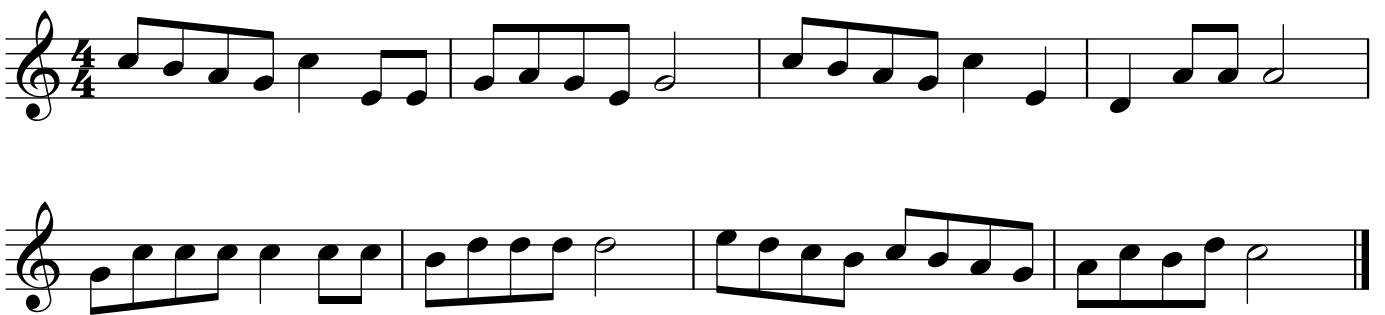
Hickory Dickory Dock



Pop Goes the Weasel



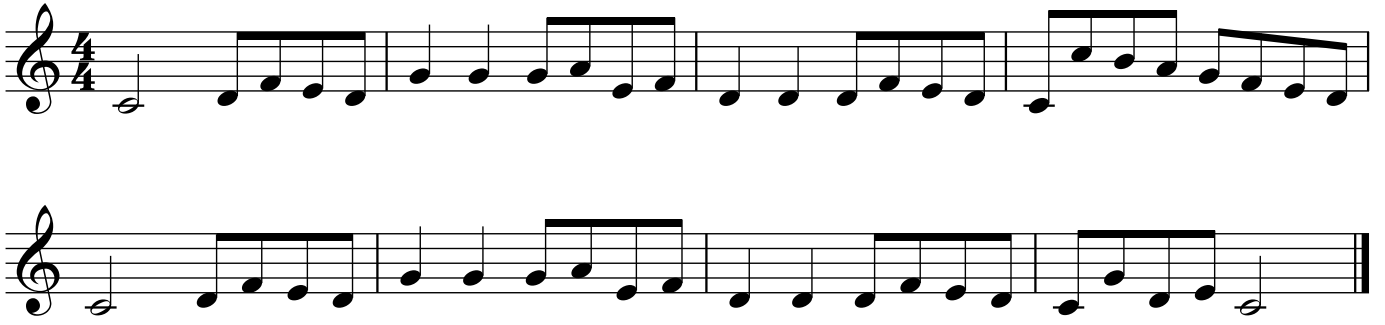
Sing a Song of Sixpence



Morning Has Broken



The Can Can



See the Conquering Hero Comes (Handel)



Fine



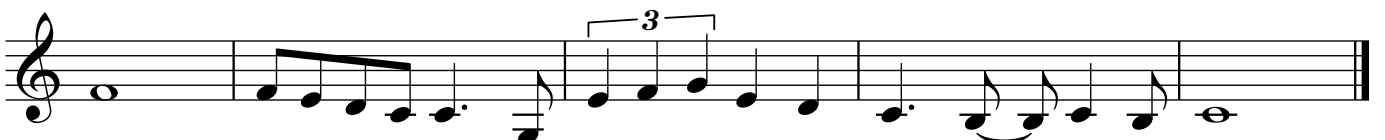
D.C. al Fine



Spread a Little Happiness



EastEnders



Do Re Mi

The first staff of music for 'Do Re Mi' is in 4/4 time and contains 12 measures. The notes are: G4 (quarter), A4 (quarter), B4 (quarter), C5 (quarter), B4 (quarter), A4 (quarter), G4 (quarter), F4 (quarter), E4 (quarter), D4 (quarter), C4 (half), B3 (quarter), A3 (quarter), G3 (quarter), F3 (quarter), E3 (quarter), D3 (quarter), C3 (half). The second staff continues with: G3 (quarter), F3 (quarter), E3 (quarter), D3 (quarter), C3 (half), B2 (quarter), A2 (quarter), G2 (quarter), F2 (quarter), E2 (quarter), D2 (quarter), C2 (half). The third staff continues with: B1 (quarter), A1 (quarter), G1 (quarter), F1 (quarter), E1 (quarter), D1 (quarter), C1 (half), B0 (quarter), A0 (quarter), G0 (quarter), F0 (quarter), E0 (quarter), D0 (quarter), C0 (half).

If you need to learn the scale up a 12th, these will help the top section

Men of Harlech

The first staff of music for 'Men of Harlech' is in 4/4 time and contains 8 measures. The notes are: G4 (quarter), A4 (quarter), B4 (quarter), C5 (quarter), B4 (quarter), A4 (quarter), G4 (quarter), F4 (quarter), E4 (quarter), D4 (quarter), C4 (half), B3 (quarter), A3 (quarter), G3 (quarter), F3 (quarter), E3 (quarter), D3 (quarter), C3 (half). The second staff continues with: G3 (quarter), F3 (quarter), E3 (quarter), D3 (quarter), C3 (half), B2 (quarter), A2 (quarter), G2 (quarter), F2 (quarter), E2 (quarter), D2 (quarter), C2 (half).

The British Grenadiers

The first staff of music for 'The British Grenadiers' is in 4/4 time and contains 8 measures. The notes are: G4 (quarter), A4 (quarter), B4 (quarter), C5 (quarter), B4 (quarter), A4 (quarter), G4 (quarter), F4 (quarter), E4 (quarter), D4 (quarter), C4 (half), B3 (quarter), A3 (quarter), G3 (quarter), F3 (quarter), E3 (quarter), D3 (quarter), C3 (half). The second staff continues with: G3 (quarter), F3 (quarter), E3 (quarter), D3 (quarter), C3 (half), B2 (quarter), A2 (quarter), G2 (quarter), F2 (quarter), E2 (quarter), D2 (quarter), C2 (half). The third staff continues with: B1 (quarter), A1 (quarter), G1 (quarter), F1 (quarter), E1 (quarter), D1 (quarter), C1 (half), B0 (quarter), A0 (quarter), G0 (quarter), F0 (quarter), E0 (quarter), D0 (quarter), C0 (half).