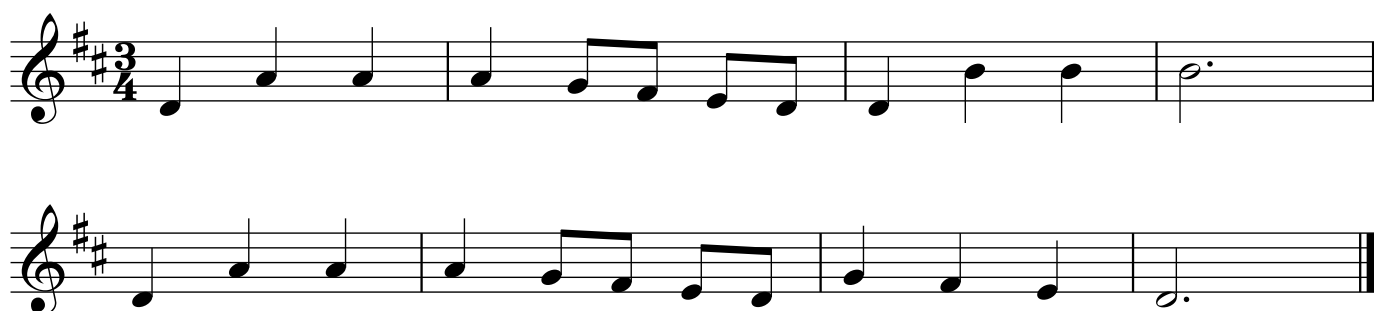


# Tunes in D major

## This Old Man



## Lavender's Blue



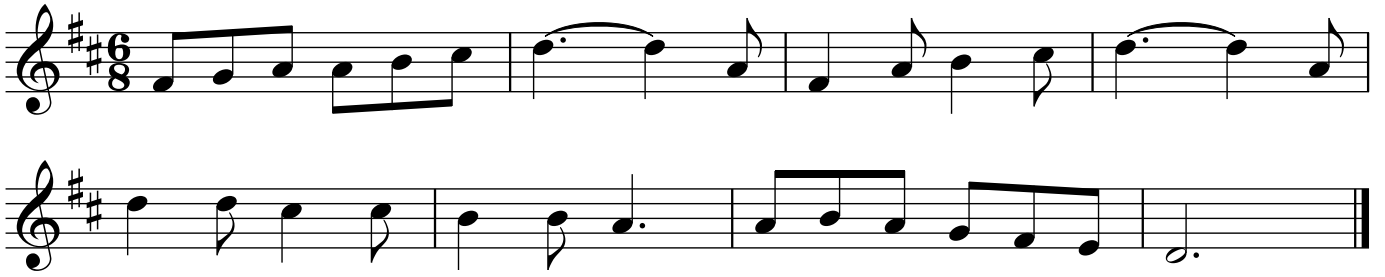
## Sing Hosanna (chorus)



## Brahms' Lullaby



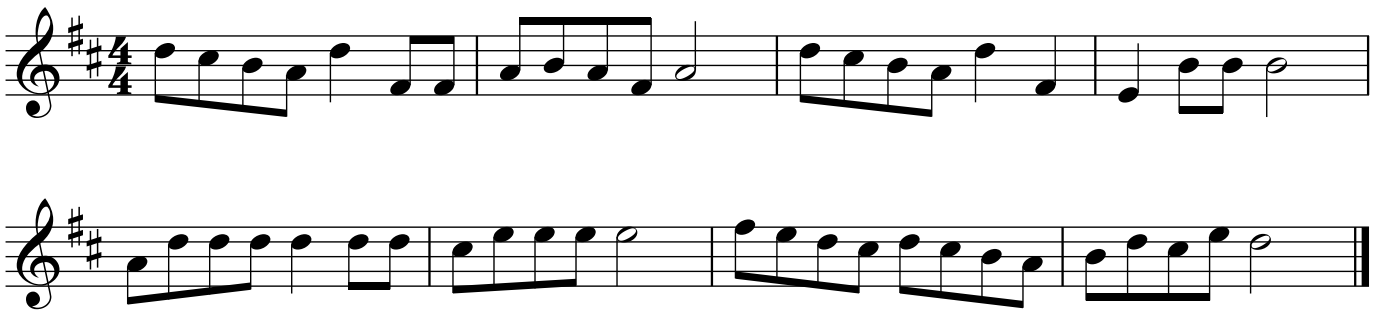
## Hickory Dickory Dock



## Pop Goes the Weasel



## Sing a Song of Sixpence



## Morning Has Broken



The Can Can

Two staves of musical notation for 'The Can Can'. The first staff begins with a treble clef, a key signature of two sharps (F# and C#), and a 4/4 time signature. The melody consists of eighth and sixteenth notes, with some beamed eighth notes. The second staff continues the melody and ends with a double bar line.

See the Conquering Hero Comes (Handel)

A single staff of musical notation for 'See the Conquering Hero Comes (Handel)'. It features a treble clef, a key signature of two sharps, and a 4/4 time signature. The melody is primarily composed of quarter and eighth notes.

Fine

A single staff of musical notation showing the 'Fine' section. It includes a double bar line followed by a repeat sign and then continues with the melody. The key signature and time signature remain the same.

D.C. al Fine

A single staff of musical notation for the 'D.C. al Fine' section. It begins with a double bar line and continues with the melody. The key signature and time signature are consistent with the previous sections.

Spread a Little Happiness

The first staff of musical notation for 'Spread a Little Happiness'. It starts with a treble clef, a key signature of two sharps, and a 4/4 time signature. The melody uses eighth and sixteenth notes.

The second staff of musical notation for 'Spread a Little Happiness', continuing the melody from the first staff. It ends with a double bar line.

EastEnders

The first staff of musical notation for 'EastEnders'. It features a treble clef, a key signature of two sharps, and a 4/4 time signature. A triplet of eighth notes is indicated with a '3' above the notes.

The second staff of musical notation for 'EastEnders', continuing the melody. It includes another triplet of eighth notes marked with a '3' above the notes. The piece concludes with a double bar line.

### Do Re Mi

Musical notation for the song "Do Re Mi" in G major (one sharp) and 4/4 time. The piece consists of three staves of music. The first staff begins with a treble clef, a key signature of one sharp (F#), and a 4/4 time signature. The melody is written in a simple, accessible style, featuring a mix of quarter, eighth, and half notes. The second and third staves continue the melody, with the third staff ending with a double bar line.

### Men of Harlech

Musical notation for the song "Men of Harlech" in G major (one sharp) and 4/4 time. The piece consists of two staves of music. The first staff begins with a treble clef, a key signature of one sharp (F#), and a 4/4 time signature. The melody is written in a simple, accessible style, featuring a mix of quarter, eighth, and half notes. The second staff continues the melody, ending with a double bar line.

### The British Grenadiers

Musical notation for the song "The British Grenadiers" in G major (one sharp) and 4/4 time. The piece consists of three staves of music. The first staff begins with a treble clef, a key signature of one sharp (F#), and a 4/4 time signature. The melody is written in a simple, accessible style, featuring a mix of quarter, eighth, and half notes. The second and third staves continue the melody, with the third staff ending with a double bar line.