

Tunes in E \flat major

This Old Man

Musical notation for 'This Old Man' in E \flat major, 4/4 time. The melody consists of two staves. The first staff contains the first four measures, and the second staff contains the next four measures, ending with a double bar line.

Lavender's Blue

Musical notation for 'Lavender's Blue' in E \flat major, 3/4 time. The melody consists of two staves. The first staff contains the first four measures, and the second staff contains the next four measures, ending with a double bar line.

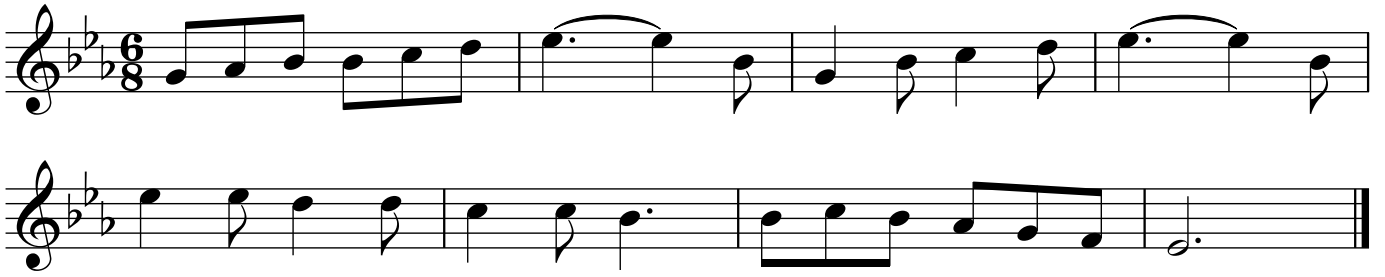
Sing Hosanna (chorus)

Musical notation for 'Sing Hosanna (chorus)' in E \flat major, 4/4 time. The melody consists of two staves. The first staff contains the first four measures, and the second staff contains the next four measures, ending with a double bar line.

Brahms' Lullaby

Musical notation for 'Brahms' Lullaby' in E \flat major, 3/4 time. The melody consists of three staves. The first staff contains the first four measures, the second staff contains the next four measures, and the third staff contains the final four measures, ending with a double bar line.

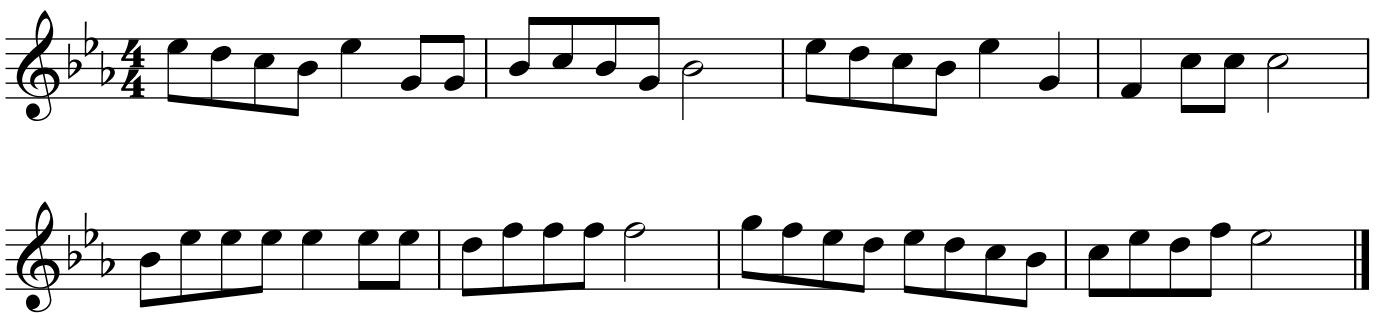
Hickory Dickory Dock



Pop Goes the Weasel



Sing a Song of Sixpence



Morning Has Broken



The Can Can

Two staves of musical notation for 'The Can Can'. The first staff begins with a treble clef, a key signature of three flats (B-flat, E-flat, A-flat), and a 4/4 time signature. The melody consists of eighth and sixteenth notes, with some beamed eighth notes. The second staff continues the melody and ends with a double bar line.

See the Conquering Hero Comes (Handel)

A single staff of musical notation for 'See the Conquering Hero Comes (Handel)'. It features a treble clef, a key signature of three flats, and a 4/4 time signature. The melody starts with a half note, followed by quarter and eighth notes.

Fine

A single staff of musical notation showing the end of the piece. It includes a double bar line followed by a repeat sign and a few more notes.

D.C. al Fine

A single staff of musical notation for the 'D.C. al Fine' section, starting with a treble clef and a key signature of three flats.

Spread a Little Happiness

A single staff of musical notation for 'Spread a Little Happiness'. It begins with a treble clef, a key signature of three flats, and a 4/4 time signature. The melody is composed of eighth and sixteenth notes.

A single staff of musical notation continuing the melody for 'Spread a Little Happiness'.

EastEnders

A single staff of musical notation for 'EastEnders'. It features a treble clef, a key signature of three flats, and a 4/4 time signature. A triplet of eighth notes is marked with a '3' above the notes.

A single staff of musical notation continuing the melody for 'EastEnders', including another triplet of eighth notes.

Do Re Mi

Musical notation for 'Do Re Mi' in 4/4 time, featuring three staves of music in a key signature of three flats (B-flat, E-flat, A-flat). The melody is written in treble clef. The first staff contains the first four measures, the second staff contains the next four measures, and the third staff contains the final four measures, ending with a double bar line.

Men of Harlech

Musical notation for 'Men of Harlech' in 4/4 time, featuring two staves of music in a key signature of three flats (B-flat, E-flat, A-flat). The melody is written in treble clef. The first staff contains the first eight measures, and the second staff contains the final two measures, ending with a double bar line.

The British Grenadiers

Musical notation for 'The British Grenadiers' in 4/4 time, featuring three staves of music in a key signature of three flats (B-flat, E-flat, A-flat). The melody is written in treble clef. The first staff contains the first four measures, the second staff contains the next four measures, and the third staff contains the final four measures, ending with a double bar line.