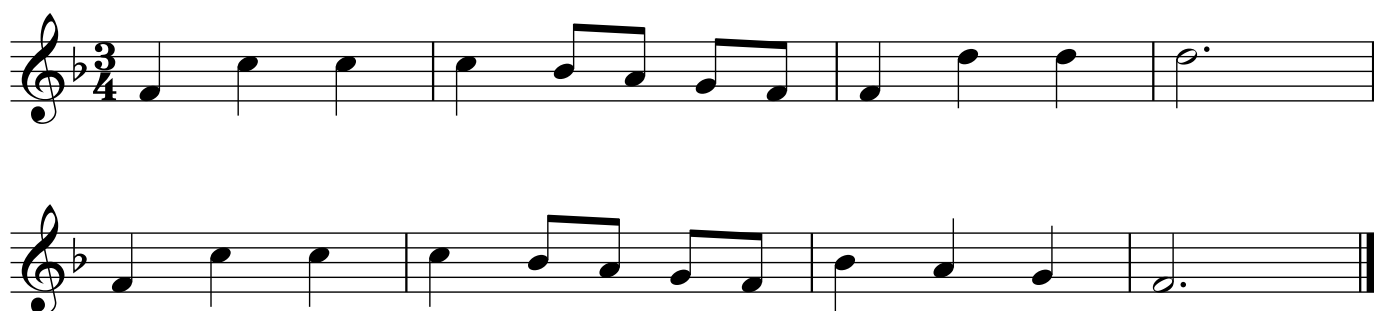


# Tunes in F major

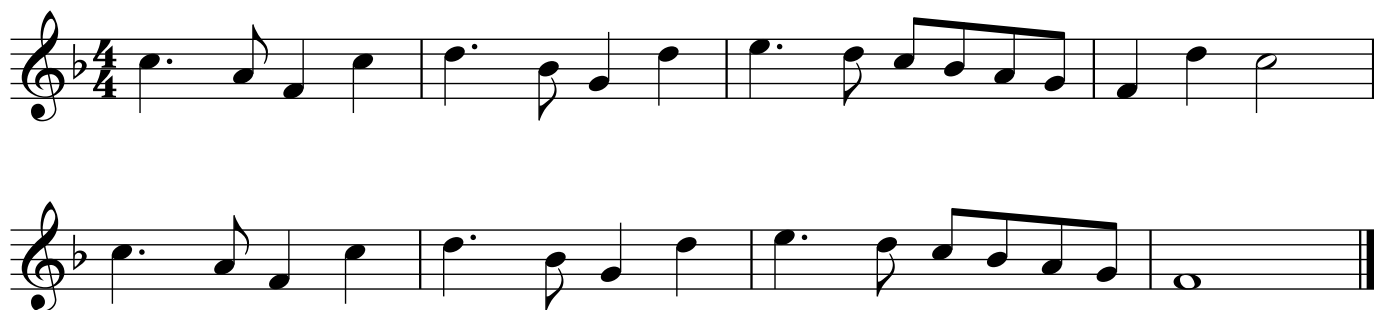
## This Old Man



## Lavender's Blue



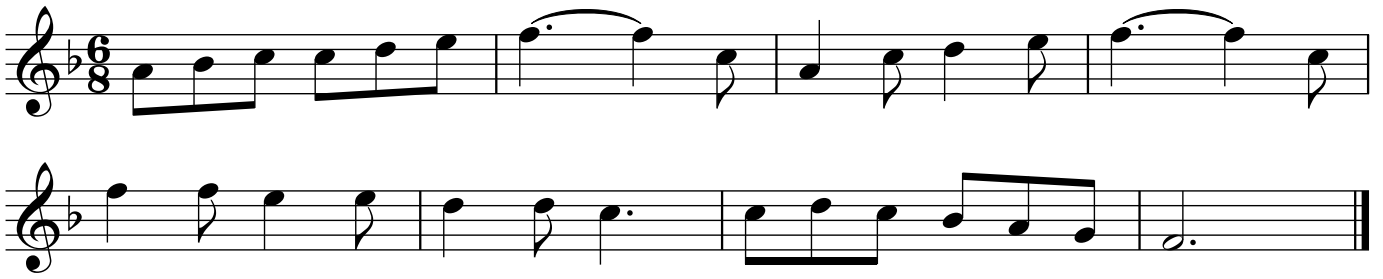
## Sing Hosanna (chorus)



## Brahms' Lullaby



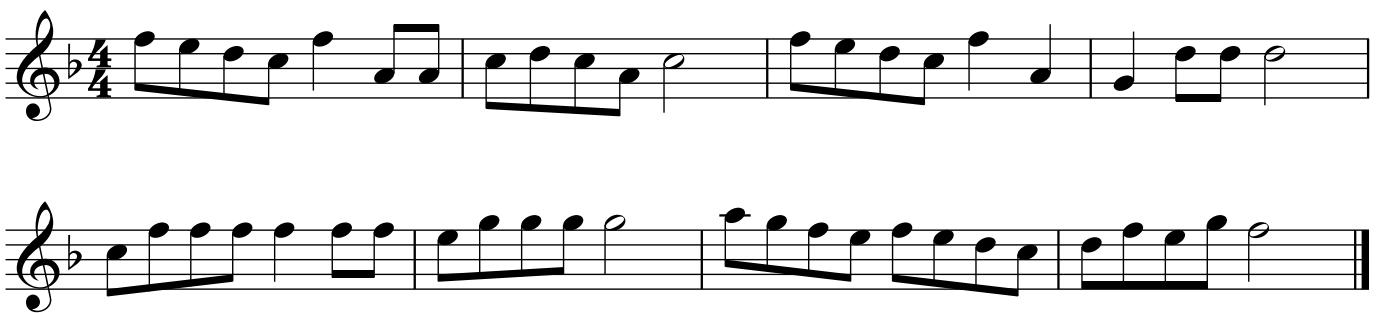
## Hickory Dickory Dock



## Pop Goes the Weasel



## Sing a Song of Sixpence



## Morning Has Broken



The Can Can

Two staves of musical notation for 'The Can Can'. The first staff begins with a treble clef and a 4/4 time signature. The melody consists of eighth and sixteenth notes, with some beamed eighth notes. The second staff continues the melody and ends with a double bar line.

See the Conquering Hero Comes (Handel)

A single staff of musical notation for 'See the Conquering Hero Comes (Handel)'. It starts with a treble clef and a 4/4 time signature. The melody features a mix of quarter, eighth, and sixteenth notes, ending with a half note.

Fine

A single staff of musical notation continuing the piece. It begins with a double bar line, followed by a treble clef and a 4/4 time signature. The melody continues with eighth and sixteenth notes.

D.C. al Fine

A single staff of musical notation continuing the piece. It starts with a treble clef and a 4/4 time signature. The melody includes quarter, eighth, and sixteenth notes, ending with a double bar line.

Spread a Little Happiness

A single staff of musical notation for 'Spread a Little Happiness'. It begins with a treble clef and a 4/4 time signature. The melody is composed of eighth and sixteenth notes.

A single staff of musical notation continuing the piece. It starts with a treble clef and a 4/4 time signature. The melody continues with eighth and sixteenth notes, ending with a double bar line.

EastEnders

A single staff of musical notation for 'EastEnders'. It begins with a treble clef and a 4/4 time signature. The melody includes eighth and sixteenth notes, with a triplet of eighth notes marked with a '3' above a bracket.

A single staff of musical notation continuing the piece. It starts with a treble clef and a 4/4 time signature. The melody features eighth and sixteenth notes, with a triplet of eighth notes marked with a '3' below a bracket.

### Do Re Mi

Musical notation for the song 'Do Re Mi' in 4/4 time, featuring three staves of music. The first staff begins with a treble clef and a key signature of one flat (Bb). The melody consists of quarter and eighth notes, with a final half note. The second and third staves continue the melody with similar rhythmic patterns and include some chromaticism in the third staff.

### Men of Harlech

Musical notation for the song 'Men of Harlech' in 4/4 time, featuring two staves of music. The first staff begins with a treble clef and a key signature of one flat (Bb). The melody is primarily composed of quarter notes with a steady, marching-like rhythm. The second staff concludes the piece with a final half note and a double bar line.

### The British Grenadiers

Musical notation for the song 'The British Grenadiers' in 4/4 time, featuring three staves of music. The first staff begins with a treble clef and a key signature of one flat (Bb). The melody is characterized by a rhythmic pattern of quarter and eighth notes, typical of a marching band tune. The second and third staves continue the melody, with the third staff ending with a double bar line.